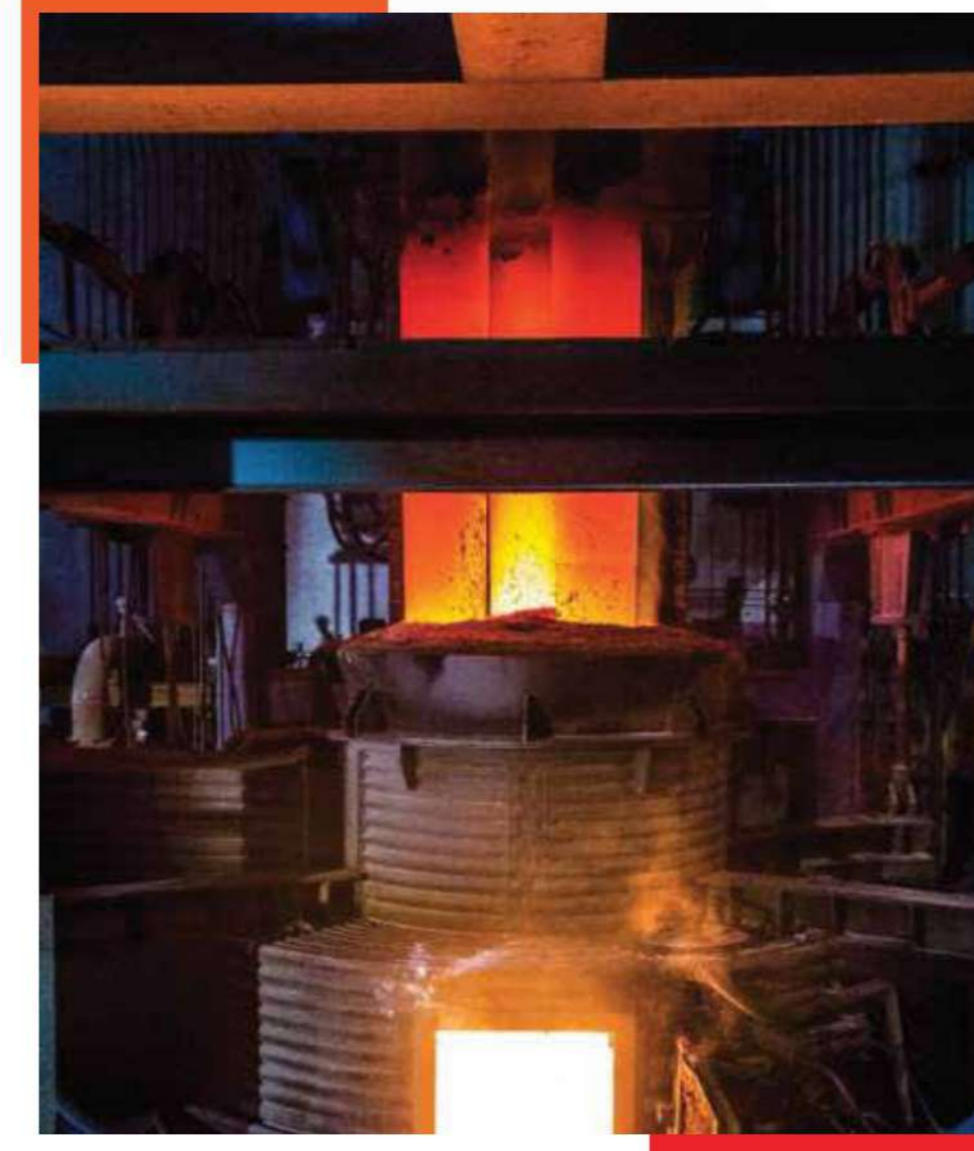


AN ENVIRONMENT FRIENDLY ALLOY AND SPECIAL STEEL PLANT



**A STATE OF THE ART ALLOY & SPECIAL STEEL PLANT
BASED IN NORTH INDIA, IS NORTH INDIA'S LARGEST
STEEL PLANT WITH AN INSTALLED CAPACITY OF
250,000 MT PER ANNUM**



**OUR JOURNEY
BEGAN AS A
ROLLING MILL IN
2004 IN A SMALL
WAY AND STEEL
MELTING FACILITIES
WENT ON STREAM
IN 2015.**

Driven by the passion of our promoters to be THE BEST in business, we have made rapid strides to become the largest over the last 5 years. We have the distinction of being the ONLY plant in north India with large Bloom casting facility (250x320 mm) which in turns gives the advantage of being able to offer widest size range to our esteemed customers (20-152mm).

Continual focus of Quality ,Cost and delivery has earned us an excellent reputation among our **customers in the Automotive, Engineering, Bearing, Railways, Defence, Agriculture Segments.** Our ability to develop products as per the stringent quality requirements conforming to Global standards, gives us a distinct advantage over competition.

Having crossed significant milestones we had set for ourselves, we have now embarked on a modernisation cum technology upgradation project . The project is in advanced stage and expected to be on stream by Dec 2021. This project has been conceived to lead to Complete Customer Delight with installation of best of the manufacturing & testing facilities.

VISION, MISSION & VALUES

Our core values reflect our company, our employees, and our customers. As a company, our core values are the heart of everything we do.

VISION

To be a Globally bench-marked Alloy and Special Steel manufacturer by creating a competitive and sustainable Value Chain for all our stake-holders and ensure Customer Delight through Innovation and Digitalisation



MISSION

“Our mission is to create Quality culture with Employees’ involvement & Motivation to develop unique product through Innovation & technology upgradation”



VALUES



RESPECT

our culture recognizes that our people are important to our business and thus we treat each other with honor and dignity, while valuing individual and cultural differences.

RELIABILITY

by being trustworthy and honoring our commitments, we build interested parties’ trust towards ourselves and our company.

LOYALTY

we respect and implement all principles in a complete and consistent manner. However, we also share our concerns and address them openly.

RESPONSIBILITY

we act in a well-thought out manner, and are encouraged to make individual decisions, while being aware of their impact on all interested parties.

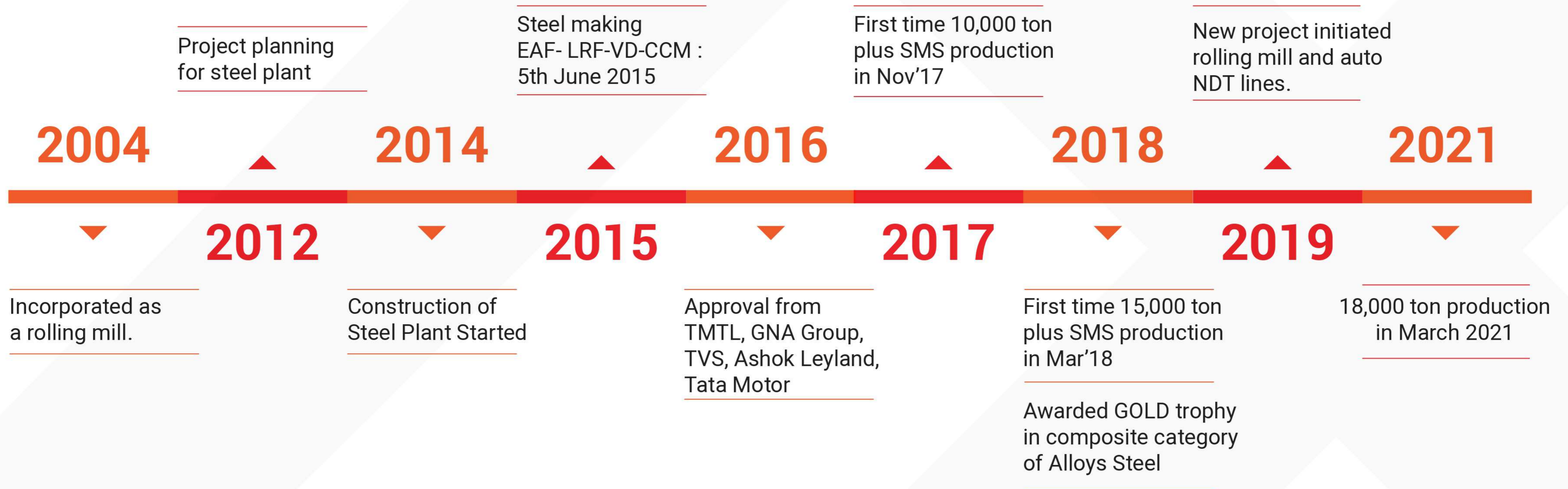
FAITH

we go beyond what is material and tangible. Whether it is faith in God, moral principles, or a common mission and goals, faith unites us in focusing on future and long-term issues.

INTEGRITY

We are honest and ethical in all our business dealings, starting with how we treat each other.

OUR JOURNEY




TURNOVER

 **152 Mln.**
FY. 2018-19

 **120 Mln.**
FY. 2019-20

 **145 Mln.**
FY. 2020-21

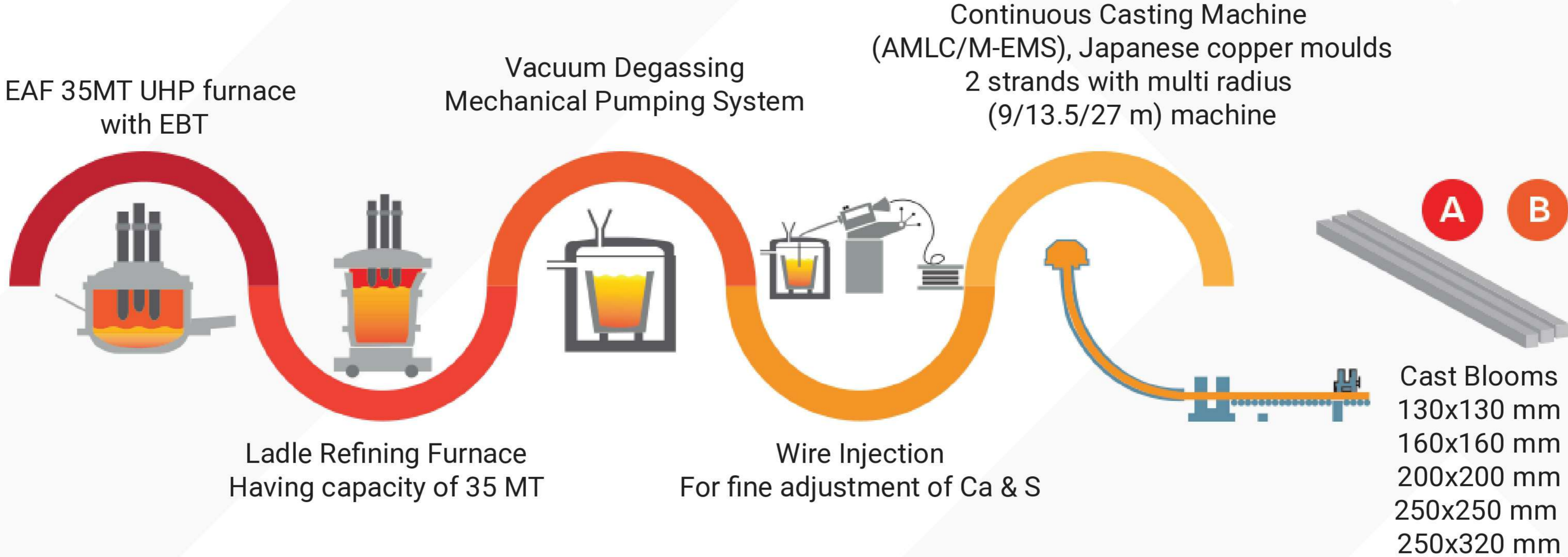
Steel Making Capacity
2,50,000 tons
(0.25 million tons per annum)



We are committed to identifying and eliminating the sources of error and waste in our processes. We believe that quality excellence is pivotal to our success.

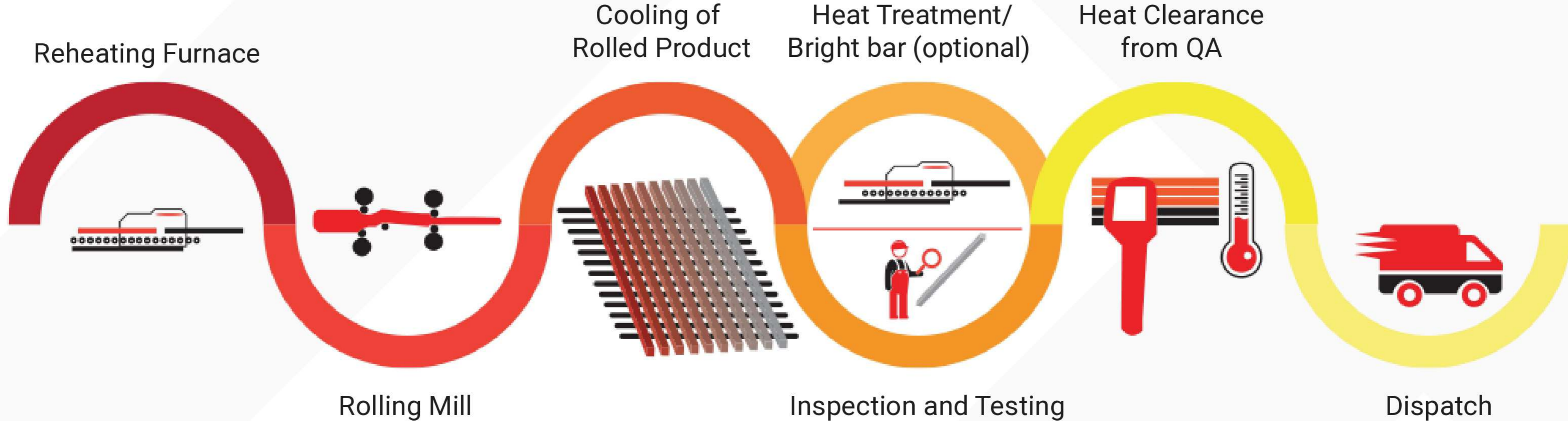
PROCESS ROUTE

Steel Scrap to Billets/Blooms Production Process



PROCESS ROUTE

Billets/Blooms to Hot Rolled Bar Production Process





ELECTRIC ARC FURNACE (EAF)

- Automatic Ferro alloy feeding system
- 35 Ton Ultra High Power furnace with a 25 MVA transformer .
- Capable of continuous feeding of DRI, Lime & Coke .
- EBT for Slag Free Tapping help us for production of clean steel
- T-T-T in EAF is less than 85 min.



LADLE REFINING FURNACE (LRF)

35 Ton LRF with provision for second one



VACUUM DEGASSING (V.D.)

Vacuum Degassing unit - Mechanical Pumping System supplied by M/s. Edward Mech. Pumps, U.K. - Can achieve 1 m bar in 6 minutes & capable of achieving as low as 0.30 m bar. Help us for production of lower gas content & cleaner steel.

CORED WIRE FEEDING

Cored Wire feeding at VD station helps in fine adjustment of "Ca" and in modification of inclusions & "S" content control as per customer requirement. It also facilitates the deep injection of additives into the steel without excessive ingress of air/oxygen.





2 STRAND CONTINUOUS CASTING MACHINE (CCM)

Multi radius (9/13.5/27 m) machine

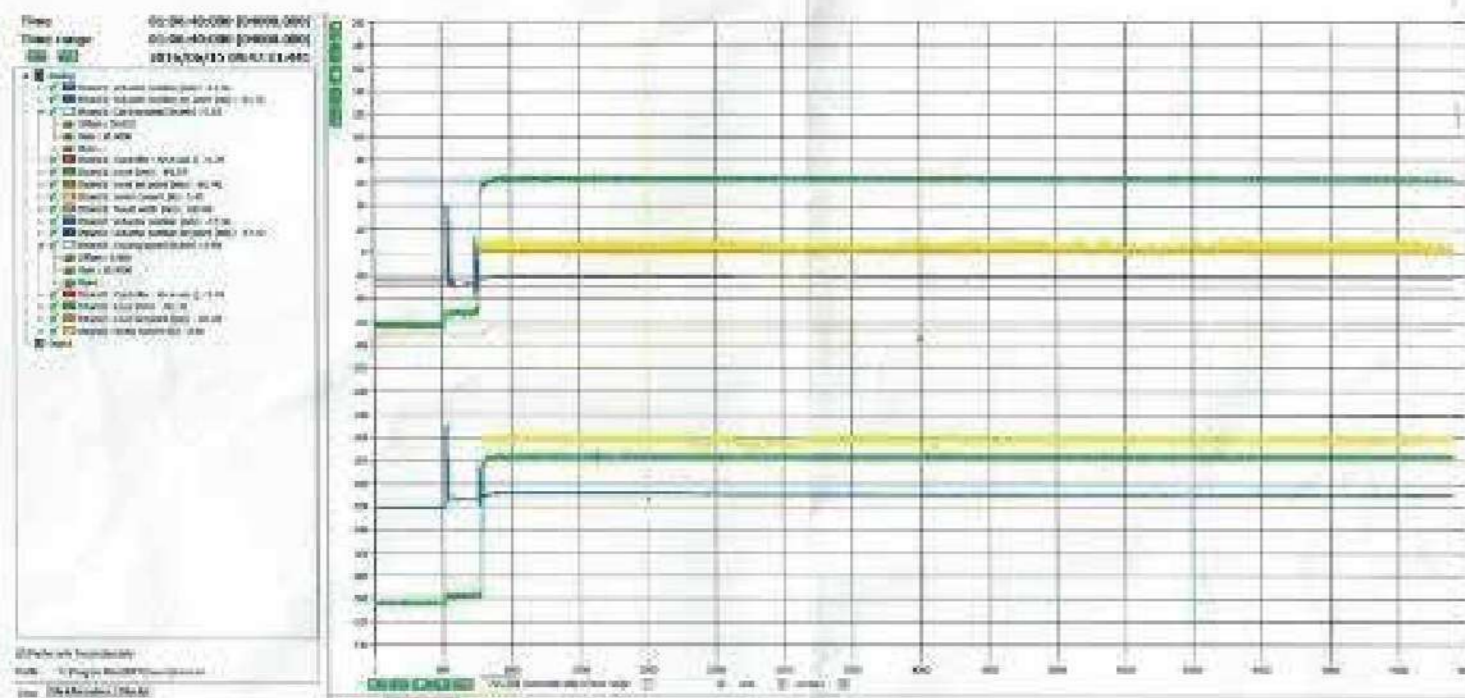


CONTINUOUS CASTING MACHINE (CCM)

- Japanese Copper Moulds from Shinko Japan
- Rigid Dummy bar.
- Tundish capacity 7.5T
- PLC controlled casting (Cooling and Oscillation parameters)

Auto cutting Torch.

Pit Cooling-100 t capacity for sensitive grades .



Cast Product Sample
200x200 billet
grade-42CrMo4

CONTINUOUS CASTING MACHINE (CCM)

- Automatic Mould Level Control (AMLC) from SERT France & Berthold Germany.
- Moulds EMS supplied by ROTELC France.
- Most Robust EMS with provision to increase the current upto 800 amps (against 200 amps with other Steel Mills in North of India).
- Air Mist Spray Secondary Cooling system helps to improve internal soundness of cast bloom



ROLLING MILLS

AISRML has Two rolling mills that cater to the complete size range

1. 660 mm mill
2. 460 mm mill

HEAT TREATMENT



30 MT Annealing Furnace



20 MT Spheroidized Annealing Furnace

BRIGHT BAR FACILITIES



Equipment	No. of units	Capacity
Bandsaw	02	Cutting dia 300 mm Max.
Straightening	02	20 to 90 mm
Peeling	02	20 to 90 mm
Reeling	01	20 to 90 mm
Centreless Grinding	02	20 to 90 mm
Magnetic Particle Inspection	01	Up to 150 mm dia & 7000 mm long bar

Supply Conditions

- Peeled & Reeled Bars.
- Peeled & Ground Bars

Quality

- h11 tolerances or better for peeled & Reeled bars.
- h10 tolerances or better for peeled & ground bars
- Straightness < 1 mm per meter
- 100% MPI tested.
- Surface defect – ZERO
- Decarburization - ZERO

OPTICAL EMISSION SPECTROMETER



- ARL 8860 Spectrometer for analysis of 35 elements and Nitrogen – Latest in the world
- Capability to observe Soluble and Non Soluble – Boron / Aluminium/Calcium/Titanium



- ARL 8820 Optical Emission Spectrometer for analysis of 33 elements
- Capability to observe Soluable and Non Soluable – Boron / Aluminium

CHEMICAL LABORATORY



Wet Chemical Laboratory for testing of Ferro-Alloys, Carburizers, Fluxes and Slag.

Well equipped Wet Chemical Analysis Laboratory for testing of Ferro-Alloys, Carburizers, Fluxes and Slag.



MECHANICAL TESTING LAB.

100 Tons UTM with Extensometer - (2% Proof stress integrated with software) & Blue Fracture Testing set up.



METALLURGICAL TESTING LAB.

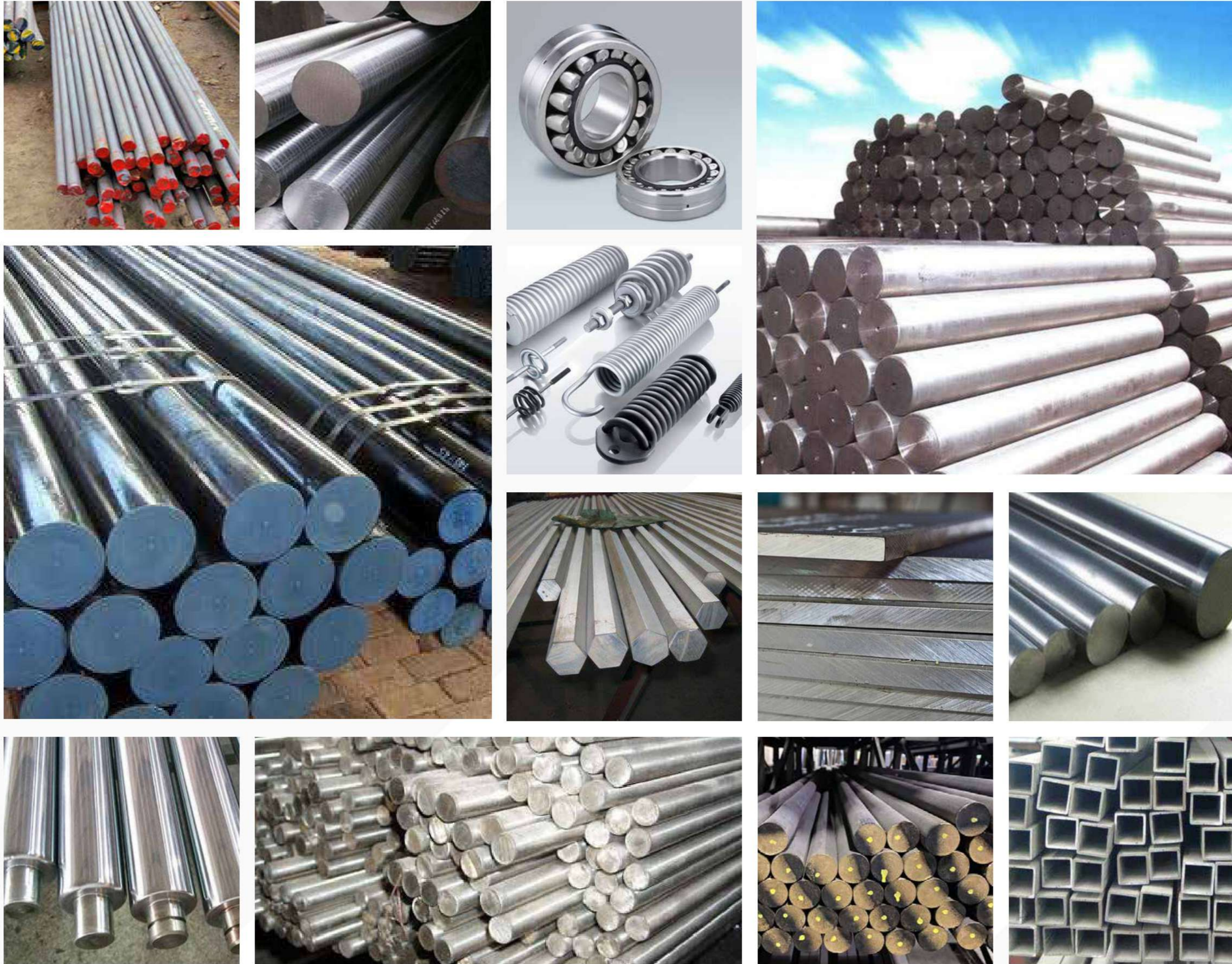
Inverted Microscope Model BX51, OLYMPUS Japan with image analyzing system – Magnification : 1000 x max.



Impact Testing Machine up to -70 degC equipped with broaching machine



Jominy End Quench Test Apparatus with Temp. Indicator. Manufactured By: Abrostate
Digital Hardness measurement and accurate height gauge control.



PRODUCT MIX

- Plain Carbon Steels
[Low Carbon, Medium Carbon, High Carbon]
- High Manganese Steels
- Chrome Steels
- Chrome Manganese Steels
- Chrome Moly Steels
- Chrome Nickel Moly Steels
- Chrome Nickel Steels
- Case Hardening & Through Hardening Steels
- Bearing Steels
- Spring Steels [Silico Manganese & Chrome Vanadium]
- Free Cutting Steels
- Boron Steels
- Micro Alloyed Steels
- Any other customized grades .

PRODUCT PROFILE

Wide range of cast, rolled and bright bar products



Cast Billet

160mm x 160mm
130mm x 130 mm

Cast Blooms

250mm to 320mm
250mm to 250mm
200mm to 200mm



Rolled Bars- Rounds

15mm to 152mm



RCS (Round Corner Square)

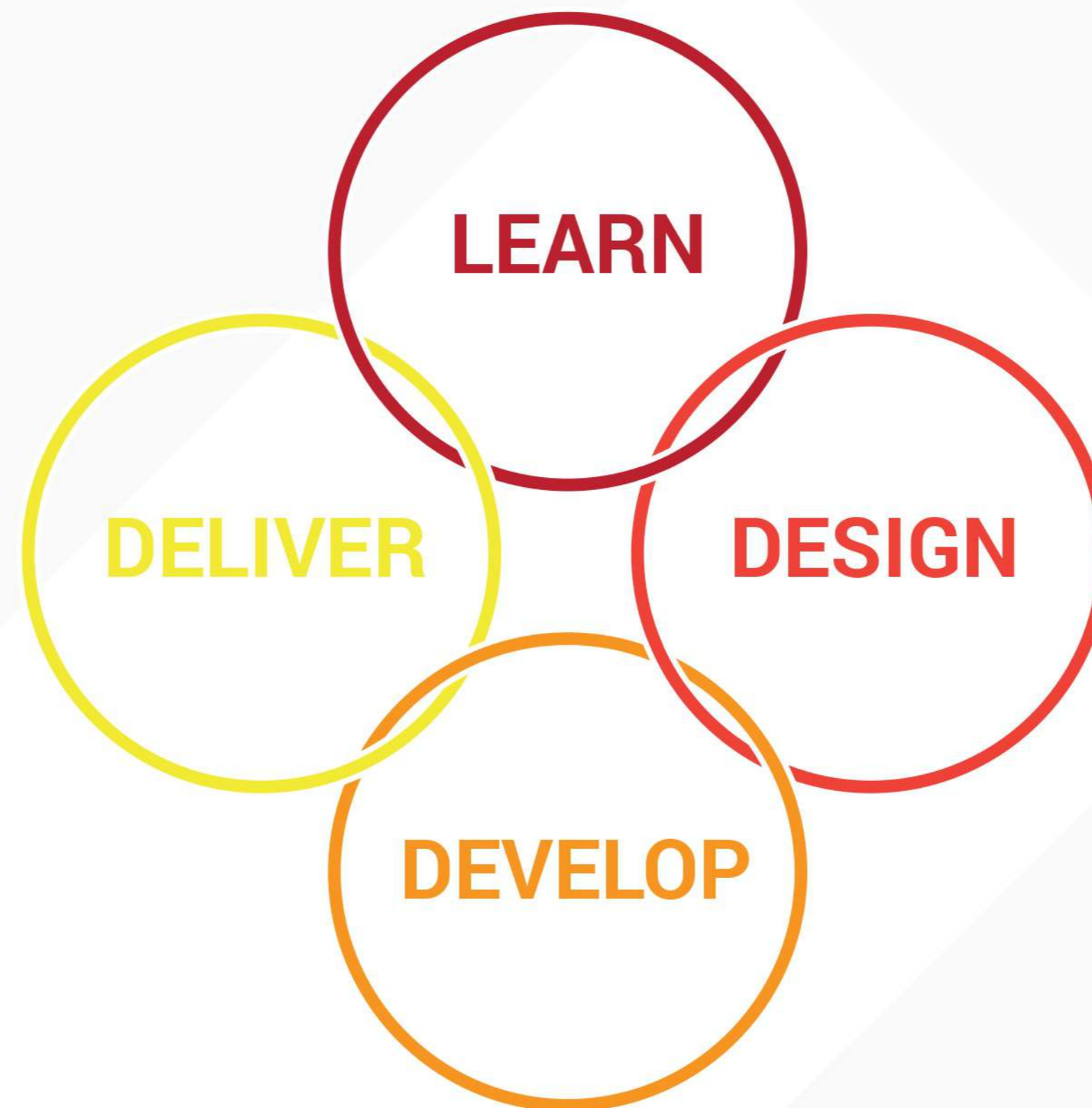
42mm to 140mm



BRIGHT BARS

20mm to 90mm
(upgradation in process
upto 118mm)

NEW PRODUCT DEVELOPMENT CYCLE



A special team of Metallurgists for New Product Developments and Technical Support to in-house production team & Customers.



Market Segment



AUTOMOTIVE



ENGINEERING



BEARING



RAILWAYS



DEFENCE



AGRICULTURE

BUSINESS ASSOCIATES (OEM APPROVALS)

We build enduring relationships by anticipating, understanding and fulfilling our customers' needs.
We take great pride in exceeding our customers' expectations.

VOLVO
Construction Equipment



Mahindra
Rise.



TATA MOTORS
Connecting Aspirations



ABC
Bearings Limited



SIEMENS
Ingenuity for life

oerlikon
graziano



mitsuba



ROYAL ENFIELD



BUSINESS ASSOCIATES (OEM APPROVAL – IN PROCESS)



OUR STRENGTH



Diversified product basket - All Alloy & Special grades in As cast, rolled bars, heat treated bars, Bright bar conditions; wide range of sizes & profiles.



State of the art manufacturing and testing facilities and investing further on upgradations



Ability to develop new alloy grades as per customer requirements meeting global standards.



Consistent growth in volumes & dynamic plans for future to be among the best Alloy steel plants in India



Qualified, Trained and motivated workforce and dynamic leadership from Visionary Top management



Proximity to major consumption clusters – Punjab, NCR, Rajasthan, Uttarakhand ,Gujarat.



Wide range of OEM approvals



Strong sales network and prompt response to customers' queries.



Flexible approach to accommodate customer's urgent requirements

PROJECTS – on the anvil

Projects	Equipments	Target Date
Electric Arc Furnace	State of art Electrode Regulation System	Dec '21
Ladle Refining Furnace	Automatic Ferro alloy addition System	Dec' 21
New Rolling Mill (1st phase) - salient features	New Pusher type reheating furnace with complete Automation/ PLC Operated Combustion System. Capacity – 25MT/hr.	March 22
	12 HV Strand (First 4 – 510 PCD, Next 4 – 410 PCD, Next 4 – 360 PCD)	March 22
	1 Rack type Cooling bed (to improve bar straightness) and 1 turn over type Cooling bed.	March 22
	Auto end cutting and chamfering in rolling mill	March 22

Projects	Equipments	Target Date
Non Destructive Testing (NDT) Line	Auto UT - Olympus make- Phased array	Dec' 21
	Straightening machine - 2 Roll straightener	Nov' 21
	Shot Blasting – will be ordered after installing Auto UT machine.	Phase II
	Magna Flux Leakage Testing (MFLT) – to be ordered after start of auto UT machine	Phase II
Continuous Casting Machine upgradation	Auto Bundling	Phase II
	Hydraulic oscillator in CCP to smooth extraction & oscillation to prevent surface imperfections on the cast blooms. etc.	Phase II
	Tundish Load Cell	Phase II
Ingot Casting	Under planning	Phase II



**We are committed to
provide safe working
environment and
promote employee health
and well being through
continuous education.**

EMPLOYEE ENGAGEMENT & WELFARE



Subsidized Canteen



Holi Milan in the plant



Continuous Learning & Development



Dinner Party – Enjoyment @ Work

50TH SAFETY WEEK CELEBRATION - 2021 (4TH MARCH TO 11TH MARCH)



Inauguration Ceremony



Safety Slogans and Poster Making Competition



'Industrial Safety and Fire Fighting' Training by Mr. Ashutosh Mishra



Mock Drill Competition



Vaccination Drive - 8th April, 2021



Talk on 'Stress Management' by Dr. Jagjot Singh (FORTIS Hospital, Ludhiana)



THANK YOU

As Export Agents :

VINMAN VENTURES & HOLDINGS PVT LTD.

22-23, Golden Avenue, Golf Links, Hambran Road,
Ludhiana - 141001 India.

Tel : +91 161 4642166

Email: gec_usa@yahoo.com | www.vkcvinstar.com